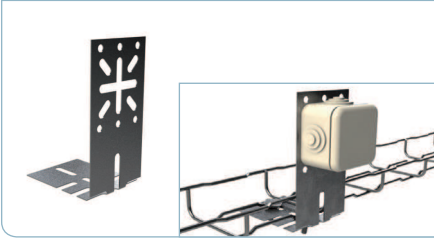


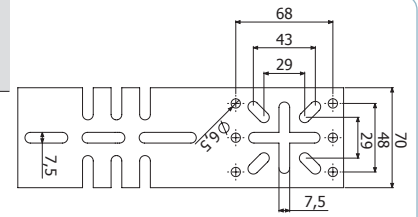


SUCM 35

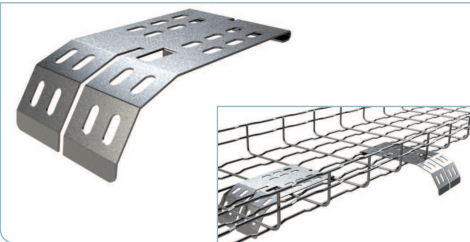


	GS		GC		i304
	REF.	kg/ud	REF.	kg/ud	
SUCM 35	2/6343	0,11	2/7256	0,12	

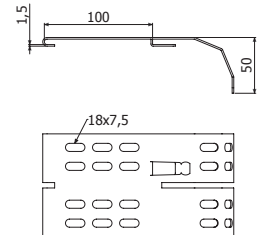
2 x CTBF (2/4362-EZ // 2/7132-GC // 2/4923-i304)



BJC



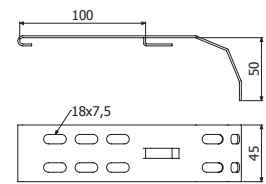
	GS		GC	
	REF.	kg/ud	REF.	kg/ud
BJC	2/6451	0,18	2/6452	0,20



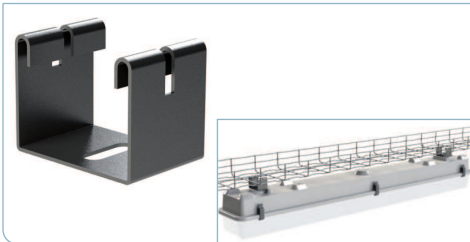
BJCM



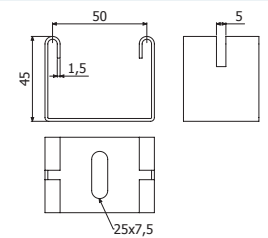
	GS	
	REF.	kg/ud
BJCM	2/9807	0,115



SFL



	GS	
	REF.	kg/ud
SFL	2/5906	0,09



PBF



	GS		GC		i304	
	REF.	kg/ud	REF.	kg/m	REF.	kg/ud
PBF	2/5590	0,13	2/4397	0,13	2/8777	0,14

